



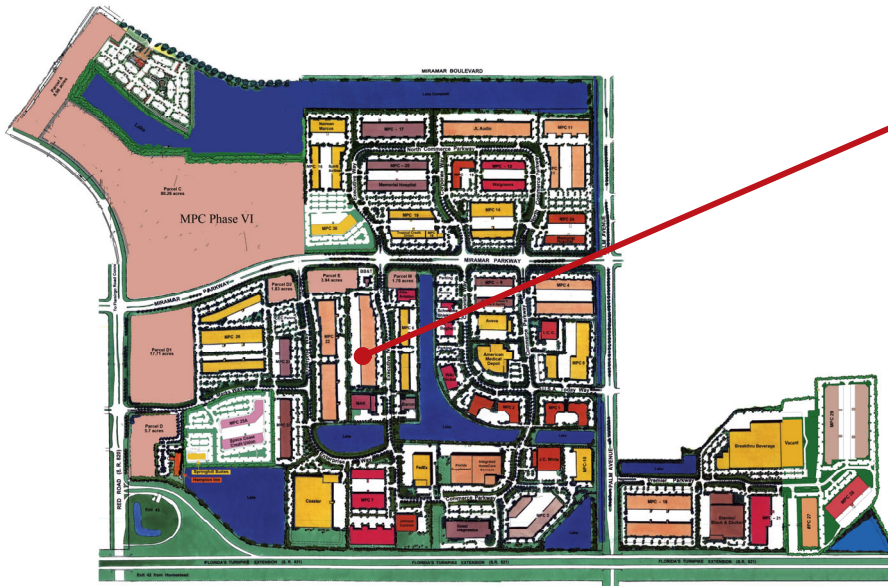
## 3200 Executive Way

former United TranzActions space

Equidistant from Ft. Lauderdale and Miami, Miramar Park of Commerce is a light industrial park campus in Southwest Broward County fronting the Florida Turnpike just one mile east of the Red Road Interchange.

Since breaking ground in 1984, Sunbeam has developed the Miramar Park of Commerce into South Florida's largest locally-owned and managed Business Park, with over five million square feet of office/service, laboratory, pharmacy, light manufacturing and distribution space.

The world class park is home to 10,000 employees from more than 170 national and international companies. New flex/office space, corporate build-to-suits as well as a limited number of second-generation spaces are available in the park.



±9,715 SF Office space  
Available Immediately



**Jonathan Kingsley**  
Executive Managing Director  
+1 954 652 4610  
[jonathan.kingsley@colliers.com](mailto:jonathan.kingsley@colliers.com)

**Jarred Goodstein**  
Managing Director  
+1 954 652 4617  
[jarred.goodstein@colliers.com](mailto:jarred.goodstein@colliers.com)

Copyright © 2021 Colliers International. Information herein has been obtained from sources deemed reliable, however its accuracy cannot be guaranteed. The user is required to conduct their own due diligence and verification.



# 3200 Executive Way

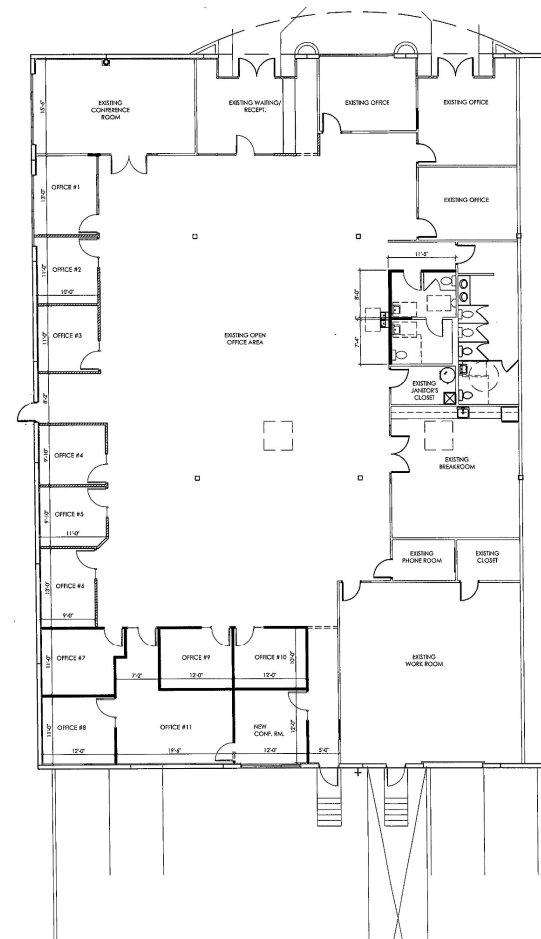
former United TranzActions space



[www.miramarfleospace.com](http://www.miramarfleospace.com)

- ± 9,715 Total SF
- 100% Office
- Dock High
- 24' Clear Height
- End Unit
- Parking: 5.1:1,000
- Asking Rate: \$14.50 PSF NNN

±9,715 SF Office space  
Available Immediately



**Jonathan Kingsley**  
Executive Managing Director  
+1 954 652 4610  
[jonathan.kingsley@colliers.com](mailto:jonathan.kingsley@colliers.com)

**Jarred Goodstein**  
Managing Director  
+1 954 652 4617  
[jarred.goodstein@colliers.com](mailto:jarred.goodstein@colliers.com)

Copyright © 2021 Colliers International. Information herein has been obtained from sources deemed reliable, however its accuracy cannot be guaranteed. The user is required to conduct their own due diligence and verification.