



3221 Enterprise Way

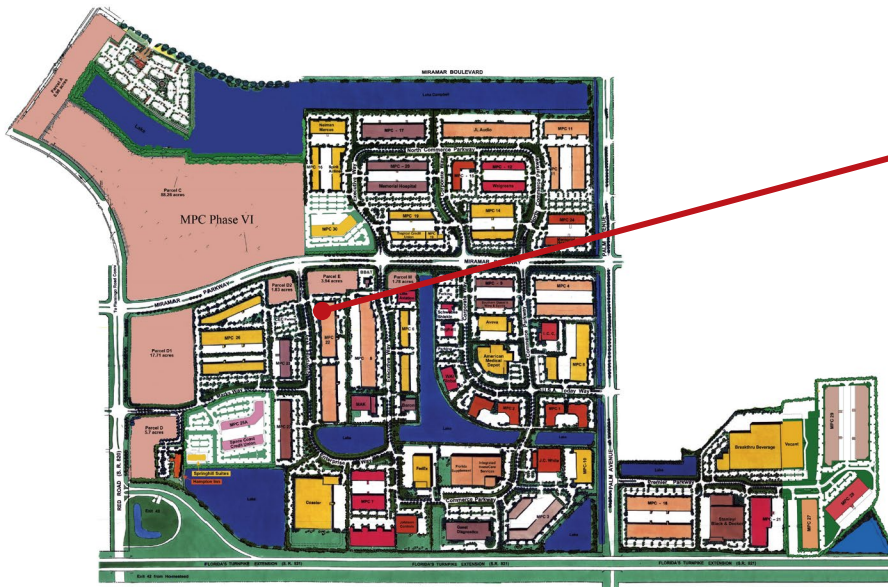
former CEC space

Equidistant from Ft. Lauderdale and Miami, Miramar Park of Commerce is a light industrial park campus in Southwest Broward County fronting the Florida Turnpike just one mile east of the Red Road Interchange.

Since breaking ground in 1984, Sunbeam has developed the Miramar Park of Commerce into South Florida's largest locally-owned and managed Business Park, with over five million square feet of office/service, laboratory, pharmacy, light manufacturing and distribution space.

The world class park is home to 10,000 employees from more than 170 national and international companies. New flex/office space, corporate build-to-suits as well as a limited number of second-generation spaces are available in the park.

±61,085 SF Flex space
Available upon buildout



Ryan Goggins
Director
+1 954 652 4613
ryan.goggins@colliers.com

Jonathan Kingsley
Executive Managing Director
+1 954 652 4610
jonathan.kingsley@colliers.com

Ilyssa Ettelman
Associate
+1 954 652 4624
ilyssa.ettelman@colliers.com

Copyright © 2019 Colliers International. Information herein has been obtained from sources deemed reliable, however its accuracy cannot be guaranteed. The user is required to conduct their own due diligence and verification.



3221 Enterprise Way

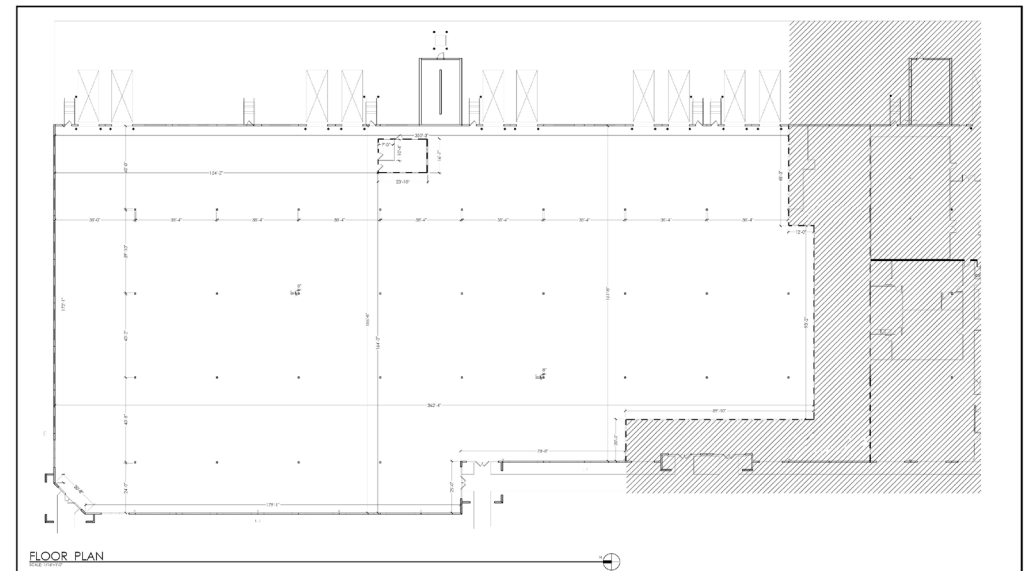
former CEC space



±61,085 SF Flex space
Available upon buildout

www.miramarfleospace.com

- ± 61,085 SF Total
- Shell Condition
- 5.0:1,000 parking
- More parking can be provided
- Dock High
- 24' Clear Height
- End Unit
- \$16.50 PSF NNN



Ryan Goggins
Director
+1 954 652 4613
ryan.goggins@colliers.com

Jonathan Kingsley
Executive Managing Director
+1 954 652 4610
jonathan.kingsley@colliers.com

Ilyssa Ettelman
Associate
+1 954 652 4624
ilyssa.ettelman@colliers.com

Copyright © 2019 Colliers International. Information herein has been obtained from sources deemed reliable, however its accuracy cannot be guaranteed. The user is required to conduct their own due diligence and verification.