



# 3221 Enterprise Way

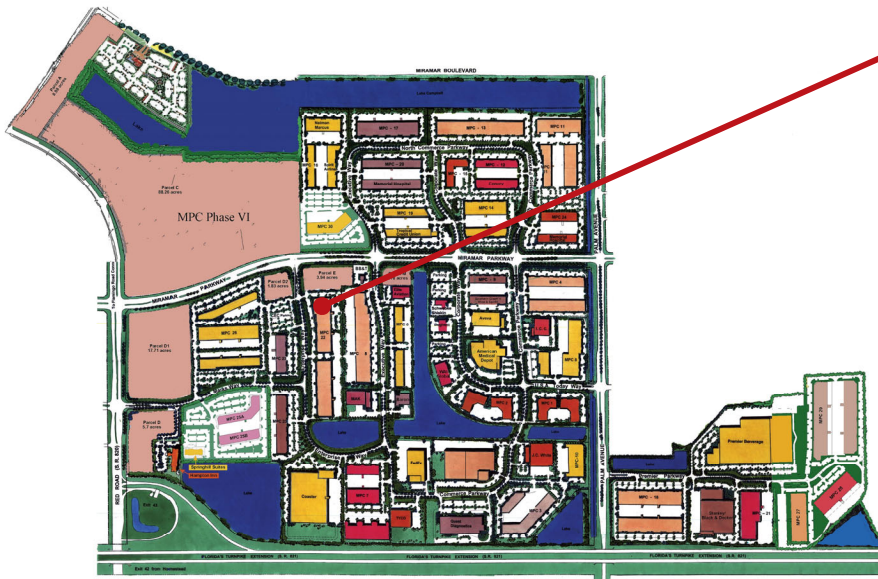
former CEC space

Equidistant from Ft. Lauderdale and Miami, Miramar Park of Commerce is a light industrial park campus in Southwest Broward County fronting the Florida Turnpike just one mile east of the Red Road Interchange.

Since breaking ground in 1984, Sunbeam has developed the Miramar Park of Commerce into South Florida's largest locally-owned and managed Business Park, with over five million square feet of office/service, laboratory, pharmacy, light manufacturing and distribution space.

The world class park is home to 10,000 employees from more than 170 national and international companies. New flex/office space, corporate build-to-suits as well as a limited number of second-generation spaces are available in the park.

± 61,085 SF Flex space  
Available upon Build-out



**Ryan Goggins**  
Director  
+1 954 652 4613  
[ryan.goggins@colliers.com](mailto:ryan.goggins@colliers.com)

**Jonathan Kingsley**  
Executive Managing Director  
+1 954 652 4610  
[jonathan.kingsley@colliers.com](mailto:jonathan.kingsley@colliers.com)

**Ilyssa Shacter**  
Associate  
+1 954 652 4624  
[ilyssa.shacter@colliers.com](mailto:ilyssa.shacter@colliers.com)

Copyright © 2019 Colliers International. Information herein has been obtained from sources deemed reliable, however its accuracy cannot be guaranteed. The user is required to conduct their own due diligence and verification.

# 3221 Enterprise Way

former CEC space

± 61,085 SF Flex space  
Available upon Build-out



[www.miramarflexspace.com](http://www.miramarflexspace.com)

- ± 61,085 SF
- Shell Condition
- 5.0:1000 parking
- More parking can be provided
- End Unit
- \$16.50 PSF NNN

