



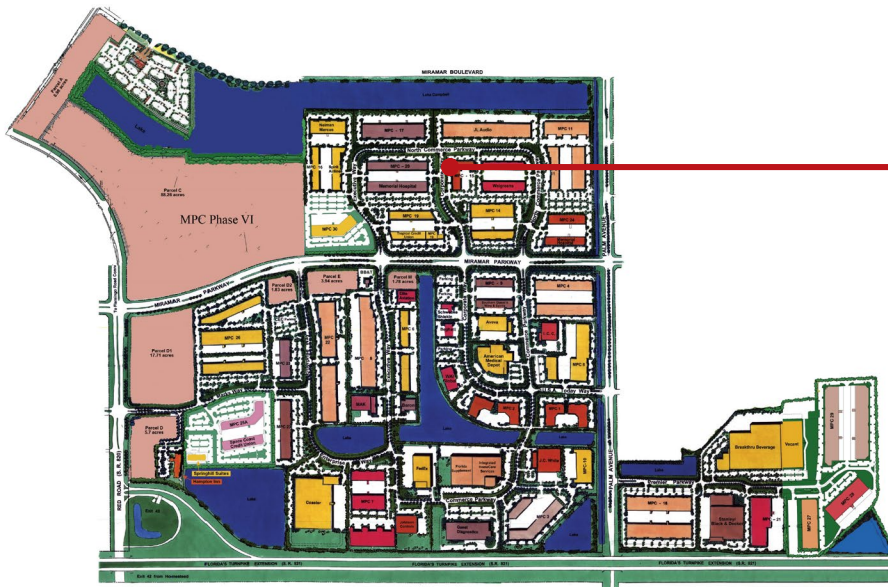
## 2861 Corporate Way

former Copy Corp space

Equidistant from Ft. Lauderdale and Miami, Miramar Park of Commerce is a light industrial park campus in Southwest Broward County fronting the Florida Turnpike just one mile east of the Red Road Interchange.

Since breaking ground in 1984, Sunbeam has developed the Miramar Park of Commerce into South Florida's largest locally-owned and managed Business Park, with over five million square feet of office/service, laboratory, pharmacy, light manufacturing and distribution space.

The world class park is home to 10,000 employees from more than 170 national and international companies. New flex/office space, corporate build-to-suits as well as a limited number of second-generation spaces are available in the park.



±9,391 SF Flex space  
Available immediately



**Ryan Goggins**  
Director  
+1 954 652 4613  
[ryan.goggins@colliers.com](mailto:ryan.goggins@colliers.com)

**Jonathan Kingsley**  
Executive Managing Director  
+1 954 652 4610  
[jonathan.kingsley@colliers.com](mailto:jonathan.kingsley@colliers.com)

**Ilyssa Ettelman**  
Associate  
+1 954 652 4624  
[ilyssa.ettelman@colliers.com](mailto:ilyssa.ettelman@colliers.com)

Copyright © 2019 Colliers International. Information herein has been obtained from sources deemed reliable, however its accuracy cannot be guaranteed. The user is required to conduct their own due diligence and verification.



## 2861 Corporate Way

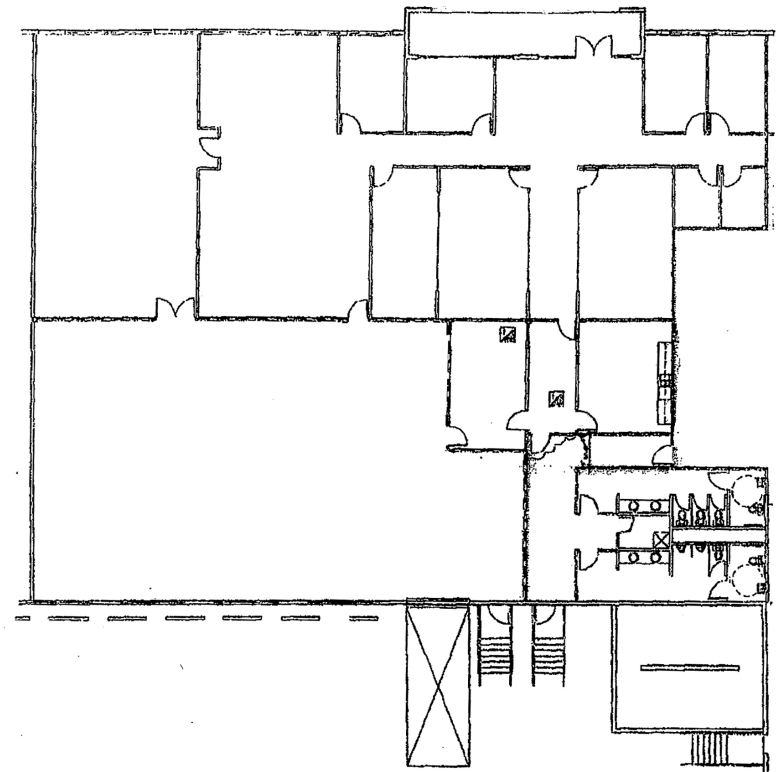
former Copy Corp space



±9,391 SF Flex space  
Available immediately

[www.miramarflexspace.com](http://www.miramarflexspace.com)

- ± 9,391 SF Total
- ± 6,136 SF Office
- ± 3,255 SF Warehouse
- Dock High
- 18' Clear Height
- Parking: 3.6:1,000
- Asking Rate: \$11.50 PSF NNN



Ryan Goggins  
Director  
+1 954 652 4613  
[ryan.goggins@colliers.com](mailto:ryan.goggins@colliers.com)

Jonathan Kingsley  
Executive Managing Director  
+1 954 652 4610  
[jonathan.kingsley@colliers.com](mailto:jonathan.kingsley@colliers.com)

Ilyssa Ettelman  
Associate  
+1 954 652 4624  
[ilyssa.ettelman@colliers.com](mailto:ilyssa.ettelman@colliers.com)

Copyright © 2019 Colliers International. Information herein has been obtained from sources deemed reliable, however its accuracy cannot be guaranteed. The user is required to conduct their own due diligence and verification.