



3301-3371 Executive Way

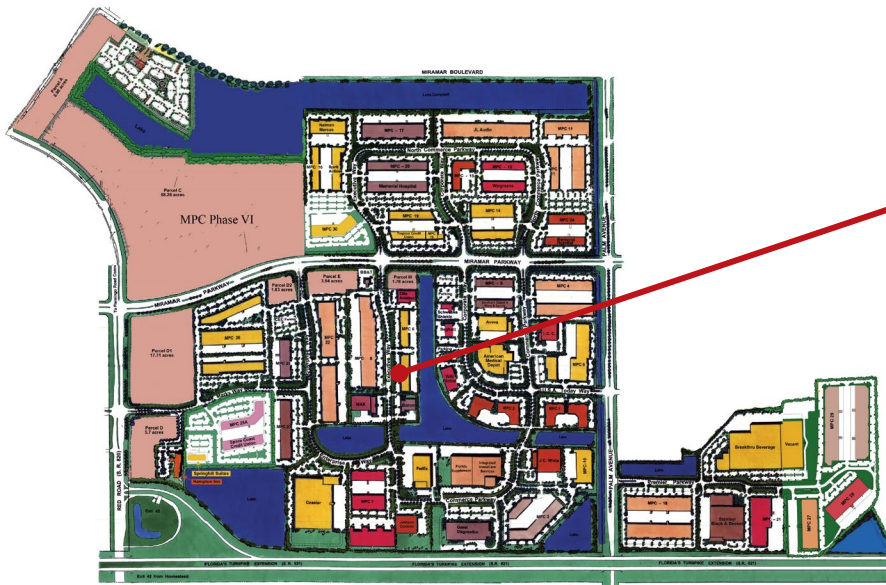
former 3Z Telecom space

Equidistant from Ft. Lauderdale and Miami, Miramar Park of Commerce is a light industrial park campus in Southwest Broward County fronting the Florida Turnpike just one mile east of the Red Road Interchange.

Since breaking ground in 1984, Sunbeam has developed the Miramar Park of Commerce into South Florida's largest locally-owned and managed Business Park, with over five million square feet of office/service, laboratory, pharmacy, light manufacturing and distribution space.

The world class park is home to 10,000 employees from more than 170 national and international companies. New flex/office space, corporate build-to-suits as well as a limited number of second-generation spaces are available in the park.

±4,046 SF Flex space
Available Immediately



Ryan Goggins
Director
+1 954 652 4613
ryan.goggins@colliers.com

Jonathan Kingsley
Executive Managing Director
+1 954 652 4610
jonathan.kingsley@colliers.com

Ilyssa Ettelman
Associate
+1 954 652 4624
ilyssa.ettelman@colliers.com

Copyright © 2019 Colliers International. Information herein has been obtained from sources deemed reliable, however its accuracy cannot be guaranteed. The user is required to conduct their own due diligence and verification.



www.miramarfleospace.com

- ± 4,046 SF Total
- ± 2,785 SF Office
- ± 1,261 SF Warehouse
- 18' Clear Height
- Dock High
- Parking: 2.5:1,000
- \$11.00 PSF NNN

±4,046 SF Flex space
Available Immediately

