



# 2800 Executive Way

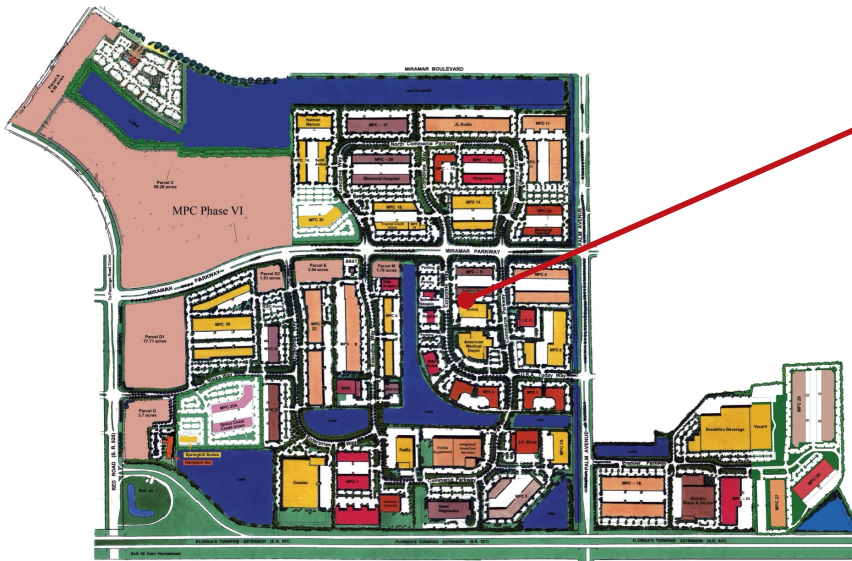
former Spirit Airlines space

Equidistant from Ft. Lauderdale and Miami, Miramar Park of Commerce is a light industrial park campus in Southwest Broward County fronting the Florida Turnpike just one mile east of the Red Road Interchange.

±56,194 SF Office space  
Available Summer 2024

Since breaking ground in 1984, Sunbeam has developed the Miramar Park of Commerce into South Florida's largest locally-owned and managed Business Park, with over five million square feet of office/service, laboratory, pharmacy, light manufacturing and distribution space.

The world class park is home to 15,000 employees from more than 170 national and international companies. New flex/office space, corporate build-to-suits as well as a limited number of second-generation spaces are available in the park.



**Jonathan Kingsley**  
Vice Chairman  
+1 954 652 4610

[jonathan.kingsley@colliers.com](mailto:jonathan.kingsley@colliers.com)

**Jarred Goodstein**  
Executive Vice President  
+1 954 652 4617

[jarred.goodstein@colliers.com](mailto:jarred.goodstein@colliers.com)

This document/email has been prepared by Colliers for advertising and general information only. Colliers makes no guarantees, representations or warranties of any kind, expressed or implied, regarding the information including, but not limited to, warranties of content, accuracy and reliability. Any interested party should undertake their own inquiries as to the accuracy of the information. Colliers excludes unequivocally all inferred or implied terms, conditions and warranties arising out of this document and excludes all liability for loss and damages arising there from. This publication is the copyrighted property of Colliers and /or its licensor(s). © 2026. All rights reserved. This communication is not intended to cause or induce breach of an existing listing agreement. Colliers International Florida, LLC.



# 2800 Executive Way

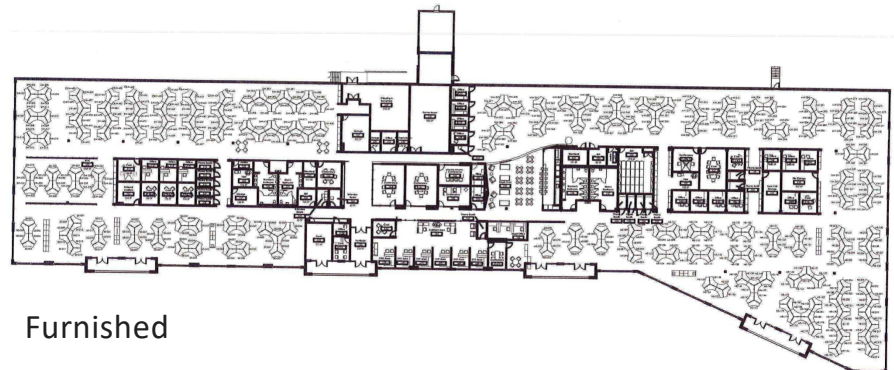
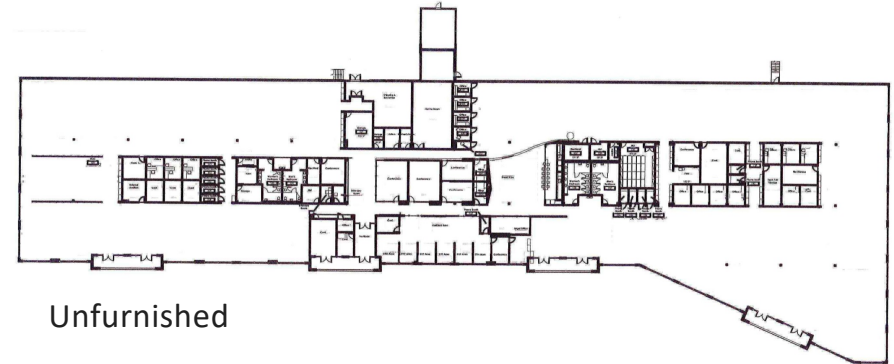
former Spirit Airlines space

±56,194 SF Office space  
Available Summer 2024



[www.miramarflexspace.com](http://www.miramarflexspace.com)

- ±56,194 SF
- 18' ceiling height
- Dock high
- Parking 5/1,000
- \$16.50/SF NNN
- Available 7/1/24



**Jonathan Kingsley**  
Vice Chairman  
+1 954 652 4610

[jonathan.kingsley@colliers.com](mailto:jonathan.kingsley@colliers.com)

**Jarred Goodstein**  
Executive Vice President  
+1 954 652 4617

[jarred.goodstein@colliers.com](mailto:jarred.goodstein@colliers.com)

This document/email has been prepared by Colliers for advertising and general information only. Colliers makes no guarantees, representations or warranties of any kind, expressed or implied, regarding the information including, but not limited to, warranties of content, accuracy and reliability. Any interested party should undertake their own inquiries as to the accuracy of the information. Colliers excludes unequivocally all inferred or implied terms, conditions and warranties arising out of this document and excludes all liability for loss and damages arising there from. This publication is the copyrighted property of Colliers and/or its licensor(s). © 2026. All rights reserved. This communication is not intended to cause or induce breach of an existing listing agreement. Colliers International Florida, LLC.